



AMERICAN ONSITE PRODUCTS

AMERICAN DIAL-A-FLOW™

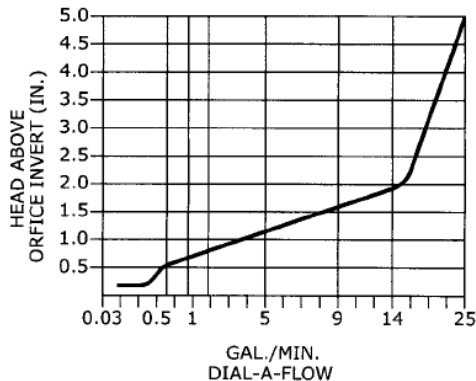
The American **DIAL-A-FLOW™** is a new and innovative device for equally distributing flow out of distribution boxes. With the eccentrically located opening, the installer can rotate the **DIAL-A-FLOW™** with a single flip of the wrist to balance all discharge ports for equal flow.

Flow Control:

The American Dial-A-Flow™ provides a circular weir. Each outlet of the distribution box will equally discharge wastewater upon rising water level in the box. When the opening becomes submerged, the dial-a-flow becomes an orifice and further enhances equal distribution. The discharge rate of each dial-a-flow is depicted in the graph. The head condition is noted in inches above the invert of the orifice and is based on open discharge. The graph was derived from testing in a laboratory environment.



Patent No. 4,298,470



Note: ASTM does not set standards for i.d. of many types of pipe. Many types of pipe are specified by o.d. and wall thickness tolerances. Make sure you check your regionally available pipe for fit prior to ordering the green or the gray. Ask for our free sample for a size check.

Installation Instructions

1. Cut pipe as evenly as possible and remove shavings.
2. Insert pipe into distribution box and extend pipe 1" into box.
3. Insert dial-a-flow into pipe ends with opening to one side. (Do not use glue) Note: Proper cutting of corrugated pipe will result in dial-a-flow snapping behind one corrugation.
4. Level pipe individually or place level on orifice lip.
5. Parge pipes in concrete boxes into place with suitable material.
6. Fill with water and "dial up" each pipe to water surface.

Featuring One Piece Construction

SPECIFICATION: DIAL-A-FLOW™

Provide a non-corrosive flow control device to be rotateably secured in the discharge piping of the drainfield distribution box. The device shall have an eccentrically located circular opening with a diameter of 1-15/16". This will provide a uniform seal in any rotated position. The device shall have a leveling lip extending into the box 1/8". The sealing means shall be a cylindrical extension inside the pipe with radially extending seal to initiate contact with pipe at least 3/4" inside the pipe. The device shall be provided with a gripping edge on the periphery of the end faces for easy rotation. The gripping edge shall consist of six uniform extensions and valleys for easy finger gripping.

The device shall be made of low density polyethylene, and one piece construction. This seal shall also be capable of snapping behind a corrugation of standard 4" corrugated pipe. The flow control device shall be Dial-A-Flow™ as manufactured by American Manufacturing Co., Inc., Manassas, Va.

Schedule 40
Astm 3034

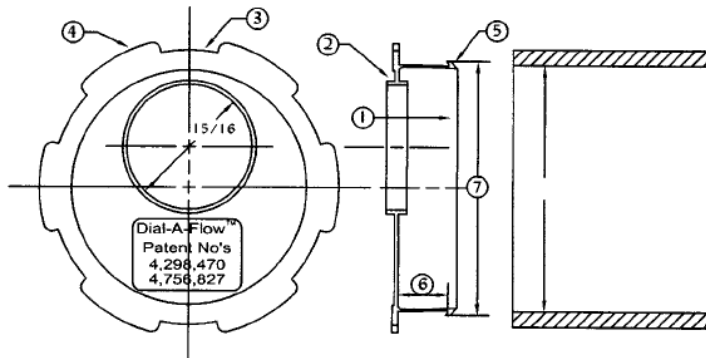
4" Nominal
S & DSdr 35
Sdr 35
4" Dual Wall

Astm 2729
Corrugated



AMERICAN ONSITE PRODUCTS

AMERICAN DIAL-A-FLOW™



DIAL 4 GREEN
4" Nominal
One-Piece Construction

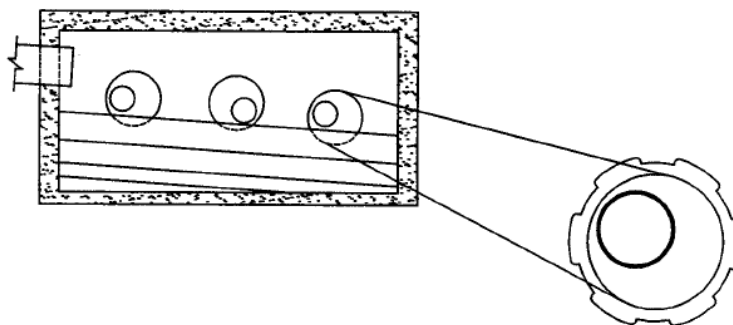
DIAL 4 GRAY
4" Nominal
One-Piece Construction

DIAL 4 BLACK
Dual Wall Pipe

How Do You Equalize Flow? The American Dial-A-Flow™

1. ECCENTRIC OPENING LOCATION
2. WEIR EXTENSION
3. FINGER GRIP VALLEY
4. FINGER GRIP EXTENSION
5. PIPE SEAL
6. 3/4" MIN. SEAL DEPTH
7. I.D. PIPE

Cross Section Of Distribution Box



ITEM	DESCRIPTION
DIAL4BLACK	DIAL-A-FLOW BLACK 4" FOR DUAL WALL
DIAL4GRAY	DIAL-A-FLOW GRAY 4" INCH
DIAL4GREEN	DIAL-A-FLOW GREEN 4

**"FREE SAMPLES AVAILABLE FOR SIZE CHECK"
PACKAGED 100 OR 200 TO A CARTON**