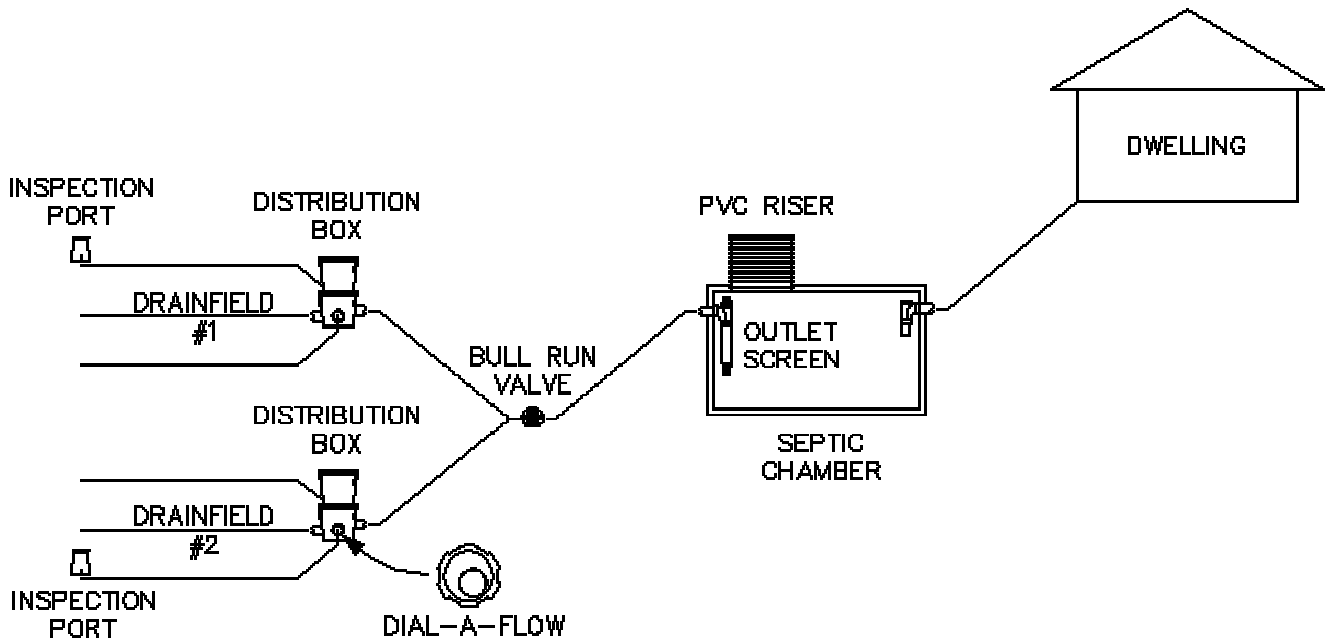


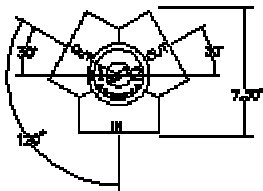
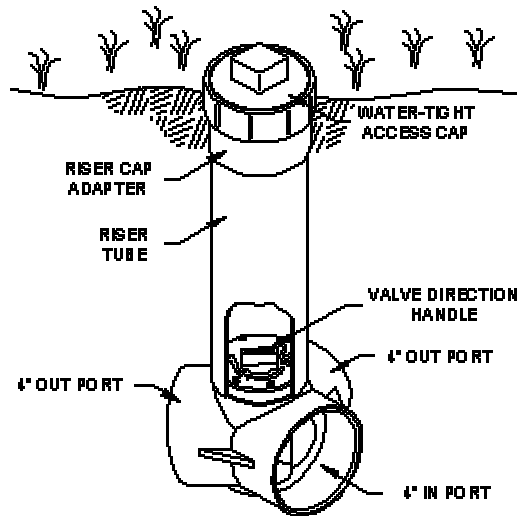
American Manufacturing Company, Inc.

CONVENTIONAL DRAINFIELD PRODUCTS



BULL RUN™ VALVE

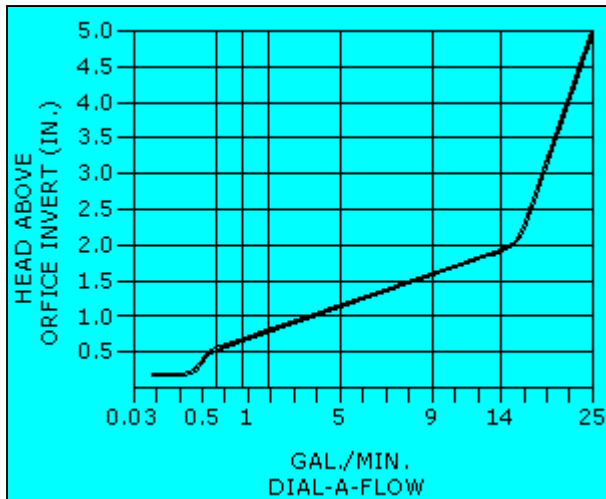
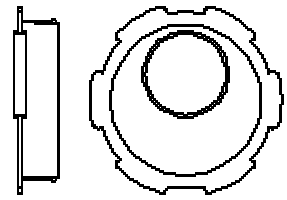
The Bull Run™ Valve is designed to split flows to each half of a septic field or between an old and a new system. Providing long-term rest (one year or more) to a drain field can significantly extend the life of the field. It will rejuvenate an old field if the field is not too small or too clogged with material. In addition to the advantages of providing longer life and easier installation, it is the most "public health safe" alternating device available for wastewater applications. The change over from one drain field to the other can be accomplished in less than a minute by simply turning the valve without digging or contact with the wastewater.



The valve is designed for direct burial requiring no concrete support or hold down straps. The valve is constructed of Schedule 40 PVC DWV 4 inch. It is easily adapted to other pipe sizes by using standard solvent weld adapter fittings.

DIAL-A-FLOW™

The Dial-a-Flow is a non-corrosive flow control device to be rotateably secured in the discharge piping of the drainfield distribution box. The device has an eccentrically located circular opening to provide a uniform overflow weir in any position. The device comes in three sizes for 4" nominal drainage pipe, one for schedule 40, one for SDR 35, and one for smaller I.D. pipes used in drainage.

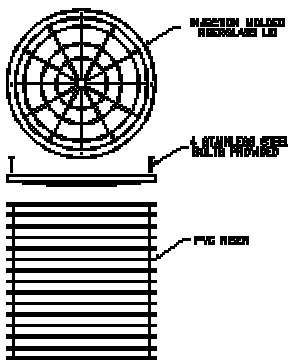


DIAL-A-FLOW™ CAPACITY CURVE

The Dial-a-Flow™ provides a uniform circular weir during open flow conditions and becomes an orifice when submerged. This further enhances its ability to provide controlled distribution of effluent. The head condition is noted in inches above the invert or the orifice (bottom inside of opening) VS the discharge rate in gallons per minute. The graph was derived through testing in a laboratory environment.

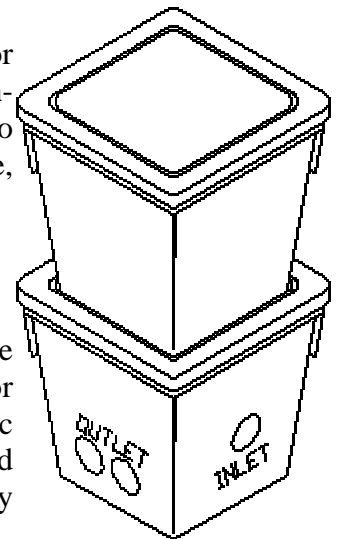
DISTRIBUTION BOXES

The American Manufacturing Company, Inc. distribution box is available for both traditional underground installation and for at-grade access. This high-density polyethylene drop or distribution box has punched hole suitable to receive locking seals. The box is non-corrosive, lightweight and easily installed.



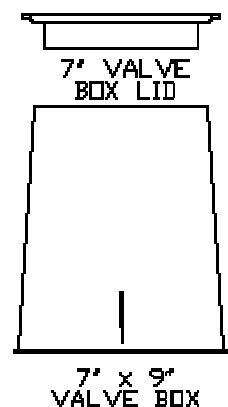
RISERS and LIDS

American Manufacturing Company, Inc. can provide 24" or 30" diameter risers and lids for pump tank or septic tank access. The risers are PVC concentric ribbed pipe with molded fiberglass gasketed lids and stainless steel fasteners. The risers can be cut to any length with standard lengths of 2 feet, and 2-1/2 feet.



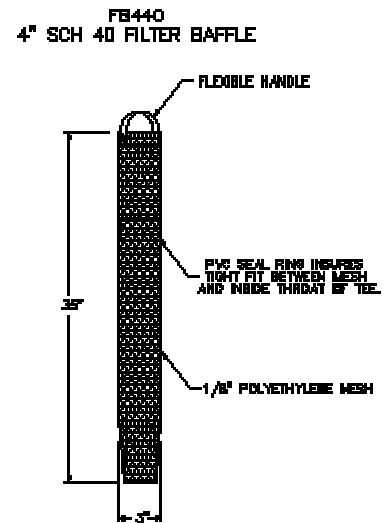
EFFLUENT SCREENS

Septic effluent screens prevent large particles from leaving the septic tank. These screens are typically advantageous in installations where larger particles leaving the septic tank may plug a downstream process such as low-pressure distribution systems. Effluent screens may help extend the life of a drainfield when installed in conjunction with a regulated management system to assure proper operation the entire system.



TRENCH INSPECTION COVERS

These trench inspection covers have green snap off lids suitable to be placed on 6" pipe cut to length and extended to the bottom of drainfield gravel to inspect for ponding.



Copyright ©, American Manufacturing Company, Inc., 2000