



AMERICAN

Manufacturing Company, Inc.

DOSING SIPHONS

OPERATION OF AUTOMATIC SIPHON

When the liquid rises in the tank above the open end of the vent pipe affects an air seal. As the liquid continues to rise, air trapped in the dome and the long leg of the main trap forces water out of the trap. When the head of the liquid in the tank forces all of the long leg of the trap a quantity of air will be pushed around the lower bend. The liquid in the short leg of the trap will be rapidly forced out of the short leg by the uprush of air and will start the siphon action. The liquid is drawn out of the tank until the air reaches the bottom of the dome, stopping the siphon action.

SIMPLEX (ONE)

An inexpensive trouble-free method of providing dosing and resting is through the use of an automatic siphon. There is an automatic dosing siphon available for a wide variety of dosing tanks and drawdown depths.

DUPLEX (TWO)

Longer periods of rest can be provided by installing two siphons in the dosing tank and alternately discharging the tank into one-half of the field at a time. The American siphon is hydraulically designed to automatically alternate when two siphons are installed. Alternation is accomplished with no moving parts as it relies upon the hydraulic design of the siphon.



1-800-345-3132 www.americansite.com

Copyright © American Manufacturing Company, Inc., 2021

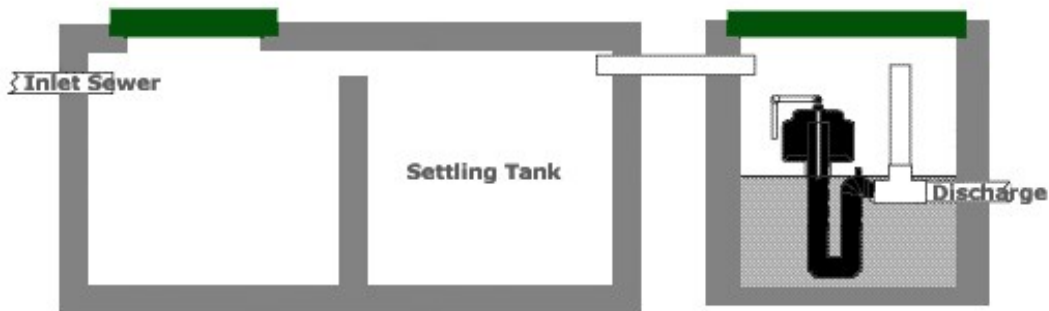


AMERICAN

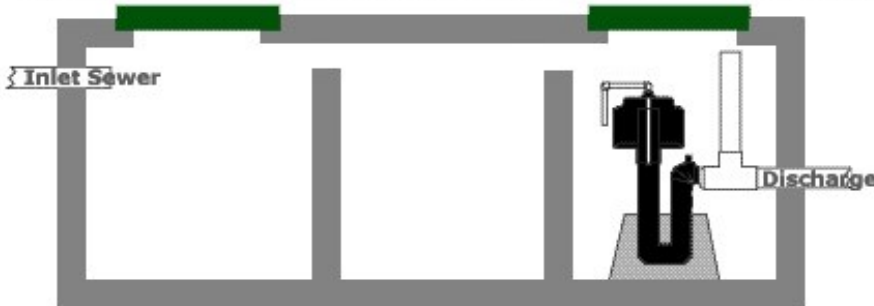
Manufacturing Company, Inc.

DOSING SIPHONS

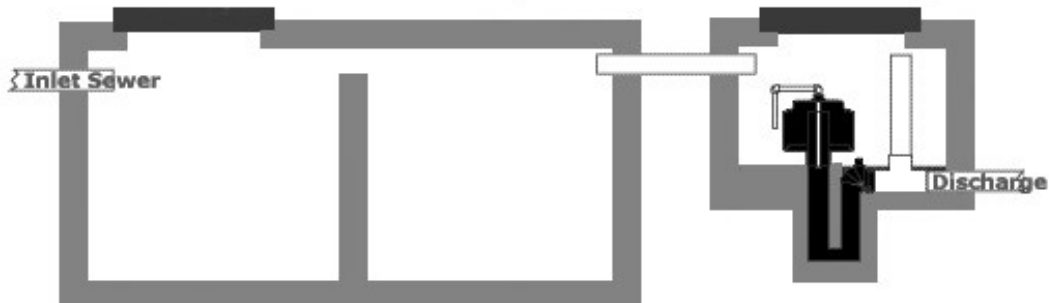
Installation of an Automatic Siphon in a Precast Concrete Manhole



Installation of an Automatic Siphon in a 3 Compartment Septic Tank



Installation of an Automatic Siphon in a Concrete Dosing Tank



1-800-345-3132 www.americansite.com

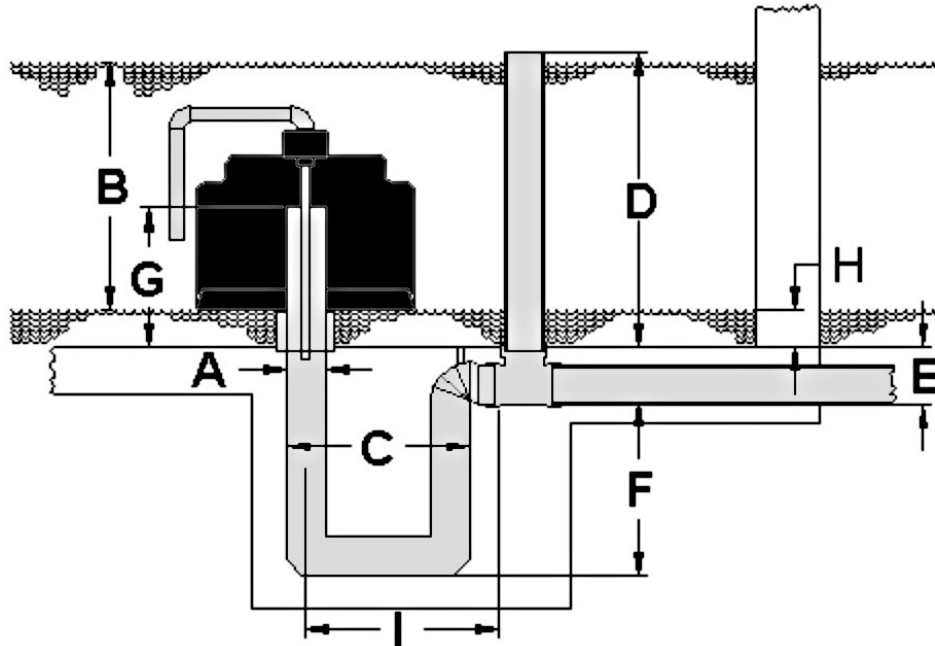
Copyright © American Manufacturing Company, Inc., 2021



AMERICAN

Manufacturing Company, Inc.

DOSING SIPHONS



APPROX. DIMENSIONS IN INCHES

SIPHON MODEL NUMBER		207	313	413	417	423	523	630	836
SIPHON DIA.	A	2	3	4	4	4	5	6	8
DRAWDOWN	B	7	13	13	17	23	23	30	36
WIDTH OF TRAP	C	6.6	8	10.5	10.5	11	13.3	16	20
HIGH WATER ABOVE FLOOR	D	9	16	20	20	26	26	33	39
FLOOR TO DISCHARGE	E	3.4	4.5	5	5	5	7.8	10	8.5
TRAP DEPTH	F	6.4	11.5	12	15	15	20	30	30
HEIGHT ABOVE FLOOR	G	5	12	9	11	16	12	15.1	25.5
BOTTOM BELL TO FLOOR	H	2	3	3	3	3	3	3	3
TRAP TO DISCHARGE	I	N/A	10.5	16.5	16.5	16.5	19.5	22	26.5
AVG. DISCHARGE G.P.M.		30	72	140	150	160	325	450	900
MIN. DISCHARGE G.P.M.		25	48	100	100	100	230	350	450
APPROX. WEIGHT (LBS)		6	7	12	13	14	17	31	57

1-800-345-3132 www.americansite.com

Copyright © American Manufacturing Company, Inc., 2021



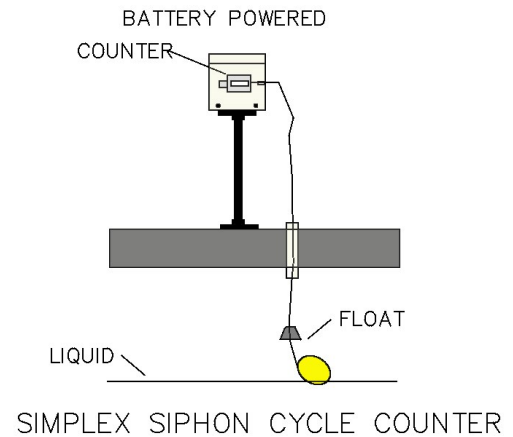
AMERICAN

Manufacturing Company, Inc.

DOSING SIPHONS

SIMPLEX SIPHON CYCLE COUNTER

The Battery operated siphon counter has a five-year battery life. The counter comes in a NEMA 4X enclosure with a non-mercury differential float switch. Dual siphon counters are provided with two counters and two flow switches.



<u>ITEM</u>	<u>DESCRIPTION</u>
DSCFS-GL	DUPLEX SIPHON CONTROL W/ 2 FLOAT SWITCHES
SIPHON207	SIPHON 2" W/ 7" DRAWDOWN
SIPHON313	SIPHON 3" W/ 13" DRAWDOWN
SIPHON413	SIPHON 4" W/ 13" DRAWDOWN
SIPHON417	SIPHON 4" W/ 17" DRAWDOWN
SIPHON423	SIPHON 4" W/ 23" DRAWDOWN
SIPHON523	SIPHON 5" W/ 23" DRAWDOWN
SIPHON630	SIPHON 6" W/ 30" DRAWDOWN
SIPHON836	SIPHON 8" W/ 36" DRAWDOWN
SSC4-B9006	SSC4-GL SIPHON COUNTER

1-800-345-3132 www.americansite.com

Copyright © American Manufacturing Company, Inc., 2021