



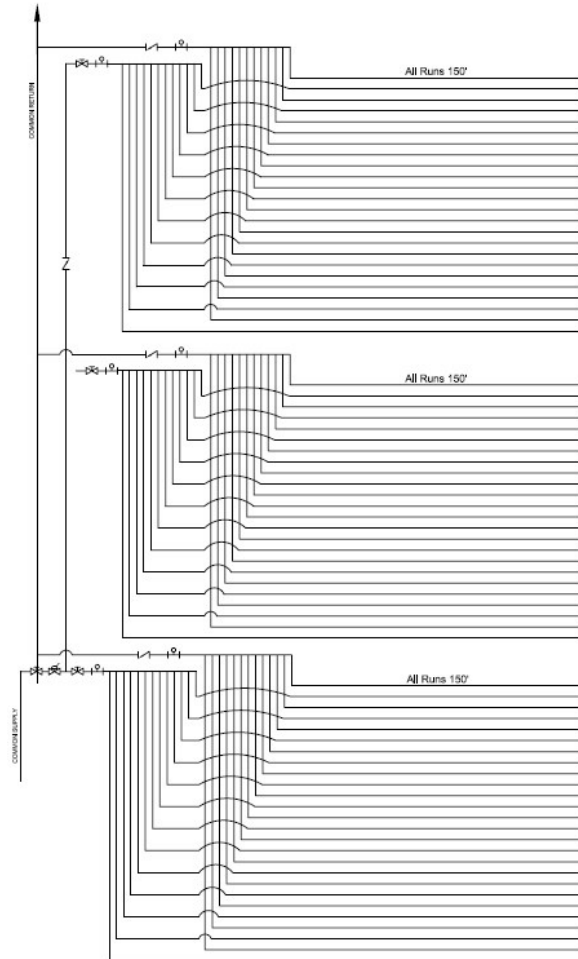
# AMERICAN

*Manufacturing Company, Inc.*

## ASD120-11,100 Linear Feet

| Legend                | 3 Subzones                | Total       | Dosing | Field Flush      |
|-----------------------|---------------------------|-------------|--------|------------------|
| ⊕ - AIR RELEASE VALVE | 2 Subzones w/ 12 Laterals | 74 Runs     | 57 GPM | 117 GPM          |
| ∨ - CHECK VALVE       | 1 Subzone w/ 13 Laterals  | 37 Lats     |        | 35' Flushing     |
| ⊗ - SHUTOFF VALVE     | Assume 2450'              | 11,100 L.F. |        | Head Loss Tubing |
| ⊗ - ZONE VALVE        | 2 Runs/Lateral            |             |        |                  |
|                       | 11,100 L.F./Zone          |             |        |                  |
|                       | Long Lat. 300'            |             |        |                  |

(4) Four - (12) Twelve Drop and (2) Two - (13) Thirteen Drop Top Feed Manifolds (3 Supply, 3 Return)



Standard Zone Detail - 11,100 LF per zone w/3 Subzones

1-800-345-3132 [www.americansite.com](http://www.americansite.com)

Copyright © American Manufacturing Company, Inc., 2021