



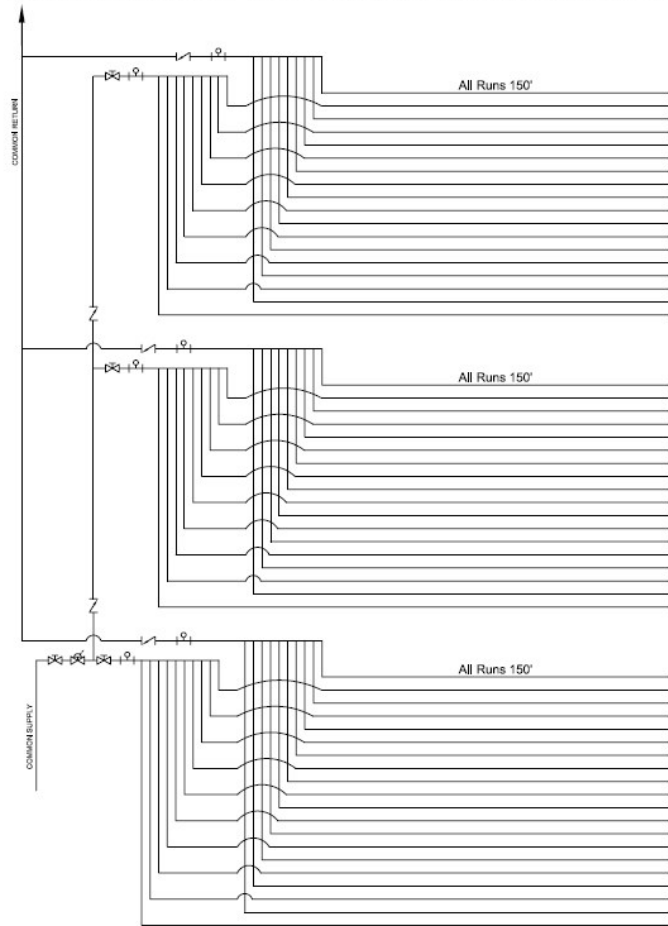
AMERICAN

Manufacturing Company, Inc.

ASD90-8400 Linear Feet

Legend	3 Subzones	Total	Dosing	Field Flush
⊥ - AIR RELEASE VALVE	2 Subzones w/ 9 Laterals	56 Runs	43 GPM	88 GPM
∇ - CHECK VALVE	1 Subzone w/ 10 Laterals	28 Lats		35' Flushing
⊗ - SHUTOFF VALVE	Assume 2450'	8400 L.F.		Head Loss Tubing
⊗ - ZONE VALVE	2 Runs/Lateral			
	8400 L.F./Zone			
	Long Lat. 300'			

(4) Four - (9) Nine Drop and (2) Two - (10) Ten Drop Top Feed Manifolds (3 Supply, 3 Return)



Standard Zone Detail - 8400 LF per zone w/3 Subzones

1-800-345-3132 www.americansite.com

Copyright © American Manufacturing Company, Inc., 2021